

property@hodge



68 Vasart Court
Perth
PH1 5QZ

Offers over
£154,995





This second-floor apartment is located at the top of its block. It is well situated in the heart of Perth City Centre, within walkable distance of both the railway station and bus station. St Catherines Retail Park is adjacent offering a variety of shops and supermarkets.

The property is offered to the market in move-in condition throughout, with a spacious dining kitchen, large lounge, two double bedrooms, one en suite and an additional bathroom.

The property benefits from double glazing, gas central heating, security entrance door and a private parking space. This would make an ideal purchase for any first-time buyer or investor looking for a well-located home in move-in condition.

Lounge 4.74m x 4.02m (15'7" x 13'2")

Dining Kitchen 3.95m x 3.12m (12'12" x 10'3")

Bedroom One 3.75m x 3.01m (12'4" x 9'11")

En Suite 2.34m x 1.32m (7'8" x 4'4")

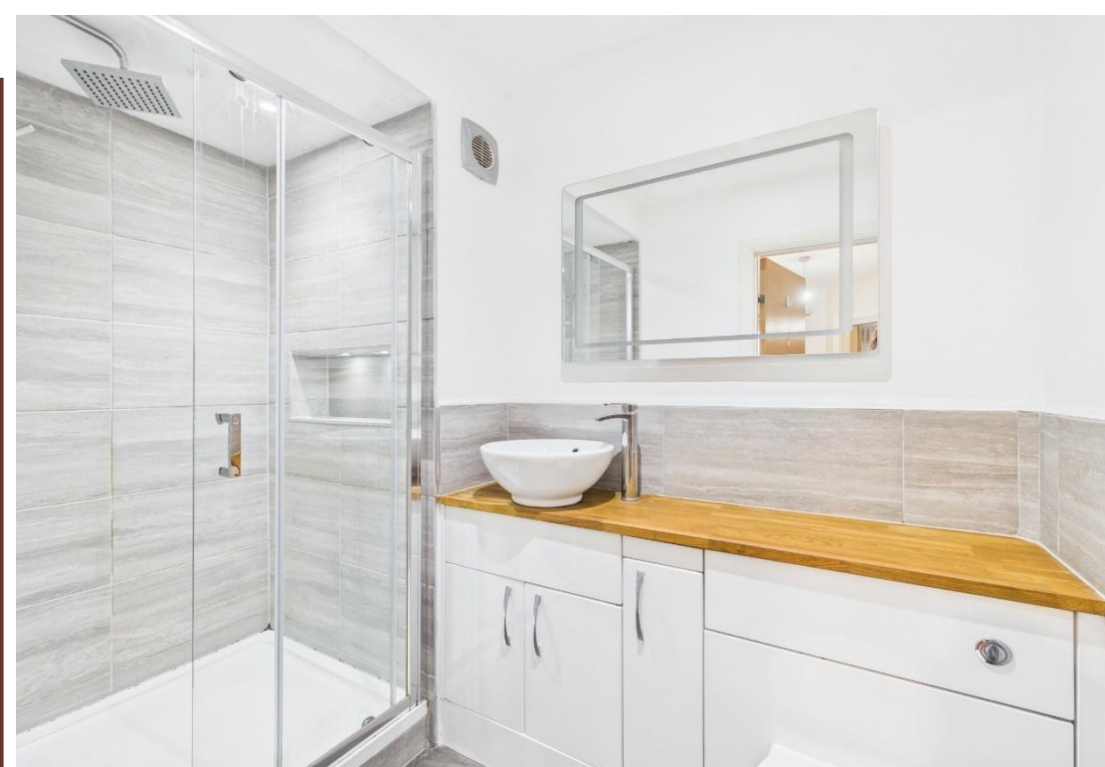
Bedroom Two 3.57m x 3.00m (11'9" x 9'10")

Family Bathroom 2.04m x 1.96m (6'8" x 6'5")



- 2 Bedrooms (1 En Suite)
- Lounge
- Dining Kitchen
- Family Bathroom
- City Centre Apartment
- GCH & DG
- Allocated Parking Space
- Close To Public Transport
- Council Tax Band D
- EPC D

2x  2x  1x 







Directions: Use what3words living.flown.peanut

Viewing Arrangements:

Contact the sole selling agent by telephoning 01250-870006 to arrange an appointment.



IMPORTANT NOTE

These particulars have been carefully prepared for the guidance of prospective purchasers but their accuracy is not guaranteed. The measurements stated are based on an electronic measuring device and a slight margin of error is possible. Where precise room measurements are essential, prospective purchasers should check such measurements prior to submission of an offer.

Any detail of these particulars can be clarified prior to viewing particularly for those travelling a significant distance.

Only prospective purchasers who have noted an interest through a Scottish solicitor will be advised of any closing date for offers.

CONTACT DETAILS

property@hodge
33 Wellmeadow
Blairgowrie
PH10 6AS

Phone: 01250 870006
Email: property@hodesolicitors.co.uk
www.hodesolicitors.co.uk

Zoopla
Smarter property search

PrimeLocation.com